



COUNTYWIDE CRIMINAL JUSTICE COORDINATION COMMITTEE



August 31, 2012

TO: Supervisor Zev Yaroslavsky, Chair
Supervisor Gloria Molina
Supervisor Mark Ridley-Thomas
Supervisor Don Knabe
Supervisor Michael Antonovich

FROM: Mark Delgado, Executive Director
Countywide Criminal Justice Coordination Committee

SUBJECT: Public Safety Realignment Implementation Update – June 2012 to July 2012
(Related to Item S-1 of the August 30, 2011 Board Agenda)

On August 30, 2011, your Board directed the Countywide Criminal Justice Coordination Committee (CCJCC) to work with impacted departments and provide status reports on public safety realignment implementation in the County. This report and data attachments provide information captured by departments through July 31, 2012.

SUMMARY

- Through the end of July, 9,823 individuals were released on Postrelease Community Supervision (PCS) to Los Angeles County, including 714 in June and 767 in July.
 - Based on Probation's review of arrest data, 26% of all individuals released on PCS in October, November, and December were arrested on a new crime within six months.
 - By law, PSPs who complete 12 consecutive months of supervision with no violations resulting in custody time are to be discharged from PCS. Probation's preliminary review indicates that approximately 550 (52%) of the 1,061 PSPs released in October 2011 may qualify for discharge barring a new violation.
 - Based on a 50% 12-month discharge rate and release projections from the California Department of Corrections and Rehabilitation (CDCR), the number of individuals on PCS in LA County may begin to level off before the end of 2012.
 - The County jail population continues to increase due to the realigned populations housed locally since October. On September 30, 2011, the jail population was 15,463. By July 31, 2012, the population had increased to 18,928. The realigned population accounted for 30% of the population: 5,035 non-violent, non-serious, non-sexual (N3) offenders (27%) and 602 parole violators (3%).
 - The County's Public Safety Realignment Team established a law enforcement working group to enhance communication and partnership with local law enforcement partners. Among the issues being addressed are information sharing initiatives and regionalization efforts.
-

POSTRELEASE COMMUNITY SUPERVISION (PCS)

Participant Numbers and Projections

According to the CDCR Law Enforcement Automated Data System (LEADS), 9,823 PSPs were released to the County on PCS between October 1, 2011 and July 31, 2012.

Table 1 – PSP Release Numbers

	OCT	NOV	DEC	JAN	FEB	MAR	APR	MAY	JUN	JUL	TOTAL
PSPs released	1,061	1,218	1,178	1,119	1,045	996	897	828	714	767	9,823

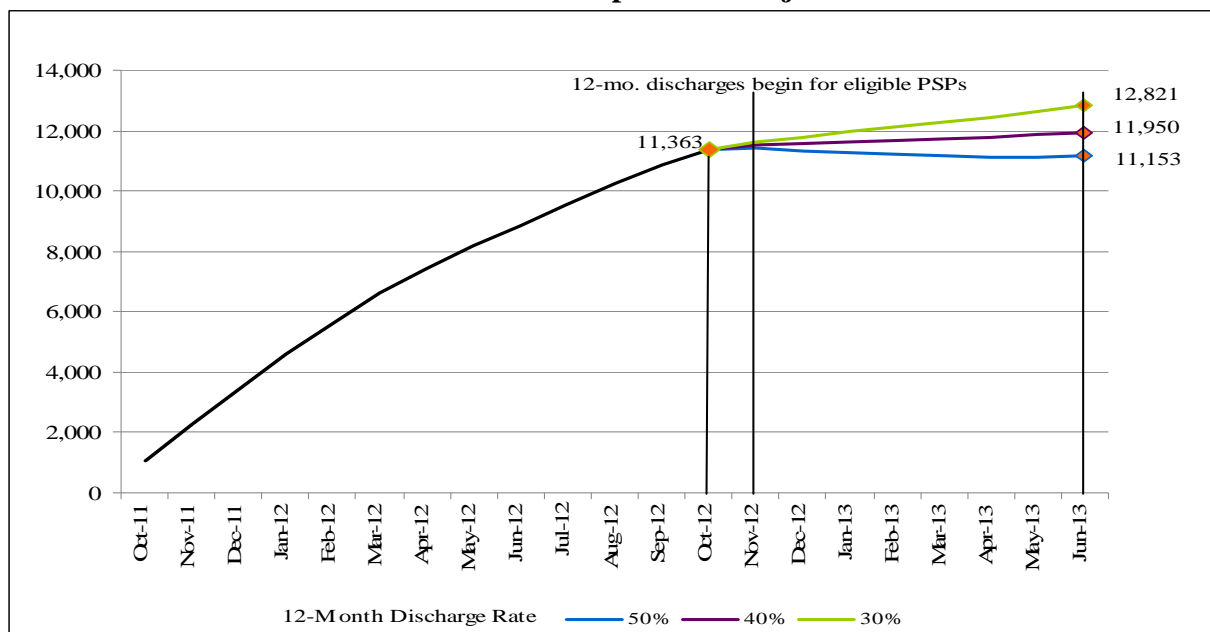
Terminations/Discharges

PCS terminations will soon significantly impact caseload numbers. By law, PSPs who complete 12 consecutive months of supervision with no violations resulting in custody time are to be discharged from supervision within 30 days. Probation has determined that potentially 550 of the 1,061 PSPs who began supervision in October 2011 (52%) will be eligible for mandatory discharge in October to November 2012.

CDCR projects that by June 30, 2013, over 15,700 PSPs will have been released to the County. Chart 1 projects the actual PCS population based on 30%, 40%, and 50% 12-month discharge rates and CDCR projections of releases this fiscal year. While both the discharge rate and actual CDCR releases may fluctuate, data suggest that the increase in the number of PSPs in the County will slow considerably this fiscal year and may even begin to level off near 12,000.

The 50% discharge rate in Chart 1 approximates the estimate for the October 2011 releases. However, as Probation continues to add supervision staff, the number of PSPs returned to custody on a violation may increase, thereby decreasing the future discharge rate.

Chart 1 – PCS Population Projection



Hub Intake/Assessment

In June and July, 704 and 763 PSPs reported to the hubs, respectively, for intake and assessment.

PSPs continue to assess as higher risk than initially projected: 60% high-risk, 38% medium risk, and 2% low risk. As a result, Probation plans to supervise PSPs at newly established risk levels (ultra high, high, and medium) and adjust caseload ratios accordingly. This model will be included in the AB 109 budget presented to your Board by the CEO in supplemental changes.

Departments highlight the following updates/developments related to hub intake processes:

- Co-located Department of Mental Health (DMH) staff at the hubs assessed 2,570 PSPs (26% of the reporting population) by the end of July.
- From October to July, the Department of Public and Social Services (DPSS) screened 5,384 PSPs for benefits eligibility and enrolled 1,736 (32%) in benefits programs. DPSS also expanded its role at the hubs effective July 16. DPSS eligibility workers have been cross trained and designated to facilitate enrollment for qualified PSPs in Healthy Way L.A. (HWLA), the County’s Low Income Health Plan. Enrollment of eligible PSPs in HWLA will help maximize Federal match dollars to support treatment services.
- Space at the Antelope Valley hub has been designated for the co-location of DMH and DPSS staff. DPSS co-located staff at the hub on July 16; DMH staff will co-locate beginning September 4.

Provision of Treatment Services to Individuals

Improvements in treatment participation rates continued in June and July. Tables 2 and 3 show increasing substance abuse treatment participation rates for those referred to programs.

Table 2 –Referrals for Substance Abuse Assessment and Show Rates (Cumulative)

	OCT	NOV	DEC	JAN	FEB	MAR	APR	MAY	JUN	JUL
Referrals to CASCs for Substance Abuse Assessment	331	733	1,116	1,482	1,882	2,373	2,857	3,363	3,777	4,227
Number reporting to CASCs	9 3%	65 9%	265 24%	495 33%	770 41%	1,181 50%	1,527 53%	1,911 57%	2,257 60%	2,692 64%

Table 3 – Substance Abuse Treatment Referrals and Entrance Rates (Cumulative)

	OCT	NOV	DEC	JAN	FEB	MAR	APR	MAY	JUN	JUL
Number of CASC referrals for treatment	8	41	128	212	363	572	713	883	1,018	1,176
Number PSPs entering treatment	6 75%	28 68%	58 45%	93 44%	142 39%	221 39%	287 40%	369 42%	458 45%	545 46%

Table 4 shows that the refusal rates for mental health treatment have significantly decreased each month.

*Table 4 – Mental Health Treatment Determinations and PSP Refusals (By Month of Release)**

	OCT	NOV	DEC	JAN	FEB	MAR	APR	MAY	JUN	JUL
DMH Assessments – treatment needed	352	386	363	361	348	324	291	246	217	212
Number refusing mental health treatment at hubs	54 15%	66 17%	82 23%	45 12%	51 15%	54 17%	28 10%	22 9%	16 7%	14 7%

* Data are organized by month of release and are not cumulative.

Probation’s referrals to Haight-Ashbury for other supportive services continue to increase. Through the month of July, Probation made 4,490 total referrals to service for 3,985 PSPs. The most common referrals were for job readiness/job placement assistance and transitional housing.

Requests for Proposals

To further build the infrastructure for reintegration services, Probation released a Request for Proposals (RFP) on June 4 for employment-related services. The RFP closed on July 20, and the department is currently evaluating the proposals received.

Probation has also initiated discussions with the Los Angeles Homeless Services Authority (LAHSA) on the identification and management of housing service providers for the PCS population. Probation aims to engage in an agreement with LAHSA to issue an RFP and manage housing contracts. This issue is planned for presentation to your Board in September.

Prior to finalization of the employment and housing contract arrangements, Probation will continue to refer PSPs to Haight-Ashbury for services. The department aims to have a period of overlapping contracts to ensure service continuity.

Supervision and Enforcement

Probation, the Sheriff’s Department, and the District Attorney’s Office (D.A.) continue to track data on warrants, arrests, prosecutions, and other PCS enforcement efforts. Table 5 summarizes various absconder enforcement actions taken from realignment’s October 1st start date through the end of July.

Table 5 – PCS Absconder Enforcement Efforts

	OCT	NOV	DEC	JAN	FEB	MAR	APR	MAY	JUN	JUL	TOTAL
Absconder warrants requested	0	95	88	68	144	411	236	328	292	414	2,076
Absconder warrants issued	0	34	124	83	123	271	301	295	275	375	1,881
Absconders apprehended	0	22	36	59	65	95	201	213	193	240	1,124
Active warrants remaining (month end)	0	12	100	124	182	355	452	534	615	750	-

The Superior Court reports that approximately half of all absconder warrants are served within 30 days of issuance.

The Sheriff’s Department also tracks arrests of PSPs countywide by matching bookings against the LEADS database of released PSPs. Table 6 provides arrest and booking data through July and new case data captured by the D.A.

Table 6 – Countywide Arrests of PSPs and New Cases

	OCT	NOV	DEC	JAN	FEB	MAR	APR	MAY	JUN	JUL	TOTAL
Bookings for new offenses/warrants	33	95	202	321	404	477	459	635	669	794	4,089
Bookings for prior matters	47	70	75	75	75	75	173	62	61	57	770
Bookings for flash incarceration [†]					6	36	56	72	68	76	314
Total Bookings	80	165	277	396	485	588	688	769	798	927	5,173
New cases presented to the D.A. for filing				406*	188	257	329	461	468	672	2,781

[†] This row includes the number of flash incarcerations imposed by supervision deputies as a sanction. Flash incarcerations that resulted following apprehension on a warrant are included in new offense data.

* Number is cumulative from October to January

As Table 6 indicates, 770 of the recorded arrests were not actually for new offenses, but for direct transports to County jail from CDCR in advance of a court appearance on a prior matter, such as warrants or previous charges. Another 314 bookings resulted from flash incarceration, leaving 4,089 bookings for new offenses and warrants through the end of July.

Recidivism Data

Probation reviewed PCS cases originating between October and December 2011 to calculate six-month re-arrest rates and determine how many PSPs were the subject of a criminal case referred to the D.A.’s Office for prosecution.¹

The department found the following for the three-month population sample:

- 26% of all PSPs released were rearrested for a new offense within six months
- 19% of all PSPs released were the subject of a criminal case presented to the D.A.’s Office within six months

Intermediate Sanctions and Revocations

Intermediate Sanctions

Following your Board’s April 3, 2012 request, Probation implemented a process to track the use of intermediate sanctions. These sanctions have been utilized since the program’s inception, but

¹ Probation counted new arrests by matching PSPs from the October, November, and December 2011 release cohorts to booking information within six months of their respective month of release. Bookings for prior matters and flash incarcerations were not included in this count. Multiple arrests of the same PSP were also excluded.

data on their use was not available at the outset. Data in Table 7 only reflects actions taken in response to violation activity. Service referrals and added conditions, for example, are also given in response to needs assessments and would not be reflected in these totals.

Table 7 – Intermediate Sanctions Imposed by Probation

	OCT - JAN	FEB	MAR	APR	MAY	JUN	JUL	TOTAL
No. of verbal warnings		8	91	187	306	275	202	1069
Increase reporting (to DPO) requirements		1	11	25	21	20	14	92
Additional conditions of supervision	1	6	3	10	12	16	11	59
Referrals for services		1	1	8	6	9	2	27
PAAWS (Cal Trans)		7	15	7	18	14	9	70
Referral to CASC for substance abuse assessment		9	19	77	81	112	54	352
Flash incarceration (Supervision Only)		6	36	56	72	68	76	314
Flash incarceration (Warrants)	101	73	108	178	209	254	326	1249
GPS/EM		0	0	0	61	34	10	105

Revocations and Court Hearings

PCS revocations have increased significantly in recent months. In June and July, 432 petitions for revocation were submitted to the Court. This represents over half of all petitions for revocation submitted since October 2011. Data from Probation on revocation outcomes is available in Attachment I, lines 39 to 43.

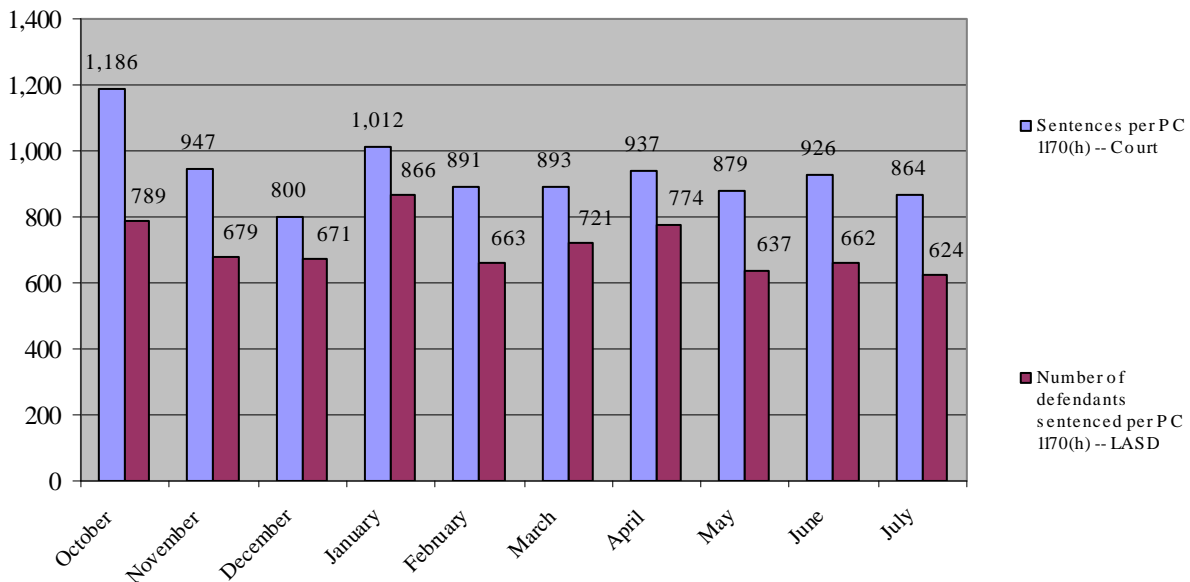
As indicated in the previous report to the Board, DMH has assigned a DMH clinical psychologist to the revocation court. PSPs facing revocation or brought to the court following apprehension on a warrant can now be immediately assessed and referred to mental health services, as needs present.

CUSTODY

Sentences per Penal Code 1170 (h)

Penal Code 1170 (h) specifies that certain non-violent, non-serious, non-sexual felony offenders (N3) are no longer eligible for state prison sentences. Chart 2 provides data on the number of PC 1170 (h) sentences given and the number of defendants who received those sentences.

Chart 2 - PC 1170 (h) Sentences



Agencies highlight the following facts related to PC 1170 (h) sentences:

- The Superior Court reports that 399 “split sentences” were given per PC 1170 (h) through the end of July. Upon an inmate’s release from jail, community supervision on split sentences is conducted by the Probation’s AB 109 staff.
- The Sheriff’s Department reports that as of the end of July, 1,833 N3s had been released from jail after having served their full custody term.
- At the end of July, 130 inmates sentenced per PC 1170 (h) were on station trustee assignment.

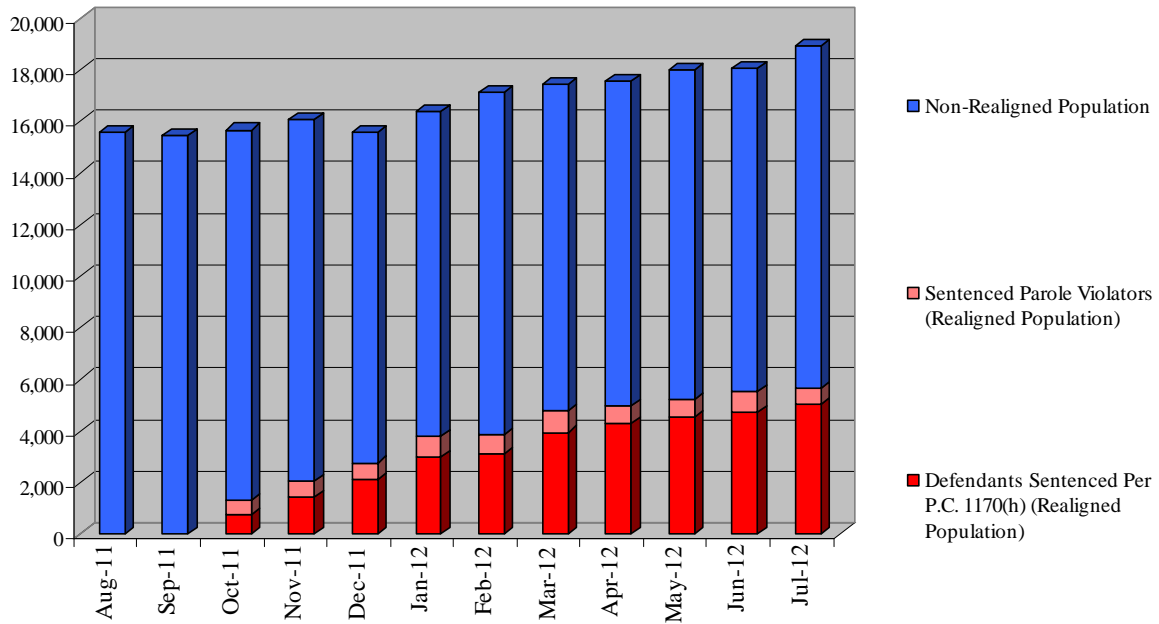
PCS and Parole Community Supervision Violations

- In June and July, Probation supervision deputies issued 144 flash incarcerations on PSPs. An additional 580 flash incarcerations were issued following warrant apprehensions.
- There were 602 sentenced parole violators in custody on July 31, 2012. As indicated in Attachment III, the number of sentenced parole violators in the jail appears to have steadied.

Summary of Custody Impact

On August 31, 2011 – a month prior to realignment’s implementation – the jail population count was 15,598. By the end of July, the total population had increased to 18,928 and included 5,035 N3s and 602 parole violators sentenced to County jail. Chart 3 illustrates this growth in the realigned and total jail population. Attachment III provides more detailed information on the population growth and shifts since realignment.

Chart 3 - Jail Population Breakdown -- (Final Day of Month)



To accommodate the jail population growth, the Sheriff’s Department continues to work with the CEO and other stakeholders to explore strategies for maximizing custody options available, such as the use of fire camps, Community Correctional Facilities, and community based alternatives to custody.

Stakeholders also continue to partner on other strategies for addressing jail population growth by improving system processes. For example, the Court, D.A., Public Defender, Alternate Public Defender, and Probation Department recently launched a pilot program to enhance the early disposition program (EDP) and more quickly resolve cases in the Court system. The results of the six-month EDP pilot, which began August 6, will be presented to your Board as data become available.

Attachments

- c: Chief Executive Officer
- Executive Officer of the Board of Supervisors
- County Counsel
- Public Safety Realignment Team
- CCJCC Members
- Civil Grand Jury

**Public Safety Realignment
Summary of Implementation Data**

OCT 2011 NOV 2011 DEC 2011 JAN 2012 FEB 2012 MAR 2012 APR 2012 MAY 2012 JUN 2012 JUL 2012 TOTAL

Postrelease Community Supervision

Pre-Release Packets

1	No. pre-release packets received	4,076	1,394	1,069	974	1,053	1,107	917	783	722	661	12,756
2	No. pre-release packets processed	1,421	1,124	1,643	1,803	1,700	1,727	1,120	835	719	644	12,736
3	No. pre-release packets deemed ineligible (of those processed)	114	41	77	89	73	65	43	39	20	27	588
4	No. PSPs with Special Handling Requirements	10	21	19	14	12	13	8	14	8	11	130
5	No. of PSPs who are registered sex offenders	20	21	13	22	18	17	24	33	25	14	207
6	No. address verifications conducted	207	64	10	8	243	438	216	107	164	169	1,626
7	No. homeless/transient PSPs per CDCR	141	165	151	135	137	111	119	121	88	102	1,270

PSP Reporting Population

8	No. PSPs released to County per pre-release packet dates	1,036	1,269	1,152	1,133	1,121	1,008	955	856	674	834	10,038
9	No. PSPs directly released to County per CDCR LEADS	1,061	1,218	1,178	1,119	1,045	996	897	828	714	767	9,823
10	No. PSPs released to Federal custody with ICE detainer	81	86	70	63	64	62	71	56	51	65	669
11	No. of PSPs released to the community by ICE							2	0	0	1	3
12	No. PSPs released to other jurisdiction custody	15	42	29	43	57	71	35	58	30	0	380
13	No. PSPs transferred to L.A. County from other counties	5	6	12	25	45	84	66	77	72	53	445
14	No. PSPs transferred from L.A. County to other jurisdictions	9	7	18	36	66	76	80	52	58	71	473
15	No. PSPs processed at hubs (intake/assessment)	756	969	951	969	899	897	780	794	704	763	8,482
16	Male	656	853	826	833	791	784	667	713	624	677	7,424
17	Female	100	116	125	136	108	113	113	81	80	86	1,058
18	No. PSPs by risk tier, as assessed at hubs:											
19	Low Risk	30	39	38	15	12	10	9	10	9	9	181
20	Male				11	7	8	8	7	9	7	57
21	Female				4	5	2	1	3	0	2	17
22	Medium Risk	242	310	304	375	386	364	305	301	328	277	3,192
23	Male				318	336	312	255	262	287	243	2,013
24	Female				57	50	52	50	39	41	34	323
25	High Risk	484	620	609	579	501	523	466	483	367	477	5,109
26	Male				504	448	464	404	444	328	427	3,019
27	Female				75	53	59	62	39	39	50	377
28	No. PSPs who are veterans		11	14	25	23	24	17	33	29	20	196

**Public Safety Realignment
Summary of Implementation Data**

OCT 2011 NOV 2011 DEC 2011 JAN 2012 FEB 2012 MAR 2012 APR 2012 MAY 2012 JUN 2012

PSP "No-Show" and Absconder Population

29	No. "no-show" notifications to Sheriff	46	139	185	157	151	183	135	122	163	13	1,294
30	No. Sheriff and LAPD attempts to contact "no-show" PSPs	46	139	185	157	151	183	35	57	24	16	993
31	No. warrants requested for absconders	0	95	88	68	144	411	236	328	292	414	2,076
32	No. warrants issued	0	34	124	83	123	271	301	295	275	375	1,881
33	No. absconders apprehended (warrant pick-ups)	0	22	36	59	65	95	201	213	193	240	1,124
34	No. of active warrants remaining*	0	12	100	124	182	355	452	534	615	750	

* The number of active warrants remaining is cumulative and includes

PSP Violations/Revocations/New Charges

35	No. of petitions for revocations (other than warrants)	0	1	3	4	41	75	127	144	156	276	827
36	How many petitions are pending Revocation Hearing?									56	39	
37	No. of Revocation Hearings	0	0	0	2	23	56	108	135	159	229	712
38	Revocation Results											
39	Intermediate sanction									7	16	23
40	Custody 11 - 45 days									6	8	14
41	Custody 46 - 90 days									19	31	50
42	Custody 91 - 180 days									7	41	48
43	Other (Continuances, Bench Warrants, etc.)									120	133	253
44	No. of PSP arrests / bookings	80	165	277	396	485	588	688	769	798	927	5,173
45	No. arrests/bookings for prior matters	47	70	75	75	75	75	173	62	61	57	770
46	No. arrests/bookings for new offenses	33	95	202	321	404	477	459	635	669	794	4,089
47	No. bookings for flash incarceration (AB 109 Supervision Only)					6	36	56	72	68	76	314
48	No. of cases presented to the D.A. for filing **				406	594	851	1,180	1,641	2,109	2,781	

** Data are cumulative and presented by the end of the month on the completion of the week closest to the end of the respective month.

Sanctions

49	No. of verbal warnings					8	91	187	306	275	202	1069
50	Increase reporting (to DPO) requirements					1	11	25	21	20	14	92
51	Additional conditions of supervision				1	6	3	10	12	16	11	59
52	Referrals for services					1	1	8	6	9	2	27
53	PAAWS (Cal Trans)					7	15	7	18	14	9	70
54	Referral to CASC					9	19	77	81	112	54	352
55	Flash incarceration (AB 109 Supervision Only)					6	36	56	72	68	76	314
56	Flash incarceration (Warrants)	1	24	34	42	73	108	178	209	254	326	1249
57	GPS/EM					0	0	0	61	34	10	105

Mental Health Treatment Services

**Public Safety Realignment
Summary of Implementation Data**

	OCT 2011	NOV 2011	DEC 2011	JAN 2012	FEB 2012	MAR 2012	APR 2012	MAY 2012	JUN 2012	JUL 2012	TOTAL
58 No. of pre-release packets forwarded to DMH for review	238	236	253	344	284	326	170	197	147	144	2,339
59 No. of mental health treatment conditions added by Probation***	900	279	218	169	208	247	194	139	158	132	2,644
60 No. DMH determinations -- treatment needed***	352	386	363	361	348	324	291	246	217	212	3,100
61 No. of PSPs refusing Mental Health Services at HUBs***	54	66	82	45	51	54	28	22	16	14	432

*** Data are reported according to the PSP month of release.

SEE ATTACHMENT II FOR ADDITIONAL MENTAL HEALTH INFORMATION

Substance Abuse Treatment Services (Based on month of assessment)

62 No. of referrals made to CASCs for Substance Abuse Treatment only assessment	331	402	383	366	400	491	484	506	414	450	4,227
63 No. of substance abuse treatment conditions added by Probation***	1,520	488	505	558	722	748	629	482	432	365	6,449
64 No. of narcotics testing orders added by Probation***	1,976	612	490	503	647	768	686	524	476	395	7,077
65 No. of PSPs showing at CASCs for assessment	9	56	200	230	275	411	346	384	346	435	2,692
66 No. of CASC referrals to:	8	33	87	84	151	209	141	170	135	158	1,176
67 Residential Treatment Services	1	5	19	19	14	24	22	36	25	34	199
68 Outpatient Treatment Services	7	28	68	65	137	185	115	129	110	124	968
69 Sober Living	0	0	0	1	0	1	4	5	0	0	11
70 No. of PSPs entering:	6	22	30	35	49	79	66	82	89	87	545
71 Residential Treatment Services	1	4	5	12	10	11	5	27	19	17	111
72 Outpatient Treatment Services	5	18	25	23	39	68	61	55	68	70	432
73 Sober Living	0	0	0	1	0	0	0	0	2	4	7

*** Data are reported according to the PSP month of release.

Referrals for other Services (Based on month of assessment)

74 No. PSPs screened for benefits eligibility by DPSS	646	780	707	755	388	336	389	438	422	523	5,384
75 No. PSPs who DPSS referred to local DPSS office	489	569	528	562	303	257	278	329	280	368	3,963
76 No. PSPs enrolled in:	186	229	248	245	139	78	157	140	154	160	1,736
77 MediCal	2	1	0	0	0	0	0	0	1	0	4
78 Med/CF	0	1	1	2	0	0	4	3	1	1	13
79 General Relief	3	16	11	9	4	5	16	6	8	5	83
80 CalFresh	156	160	174	173	109	60	86	106	105	117	1,246
81 CalFresh and General Relief	24	51	62	57	25	13	50	24	37	36	379
82 CalWorks/CalFresh	1	0	0	4	1	0	1	1	2	1	11
83 No. PSPs referred to DHS for Healthy Way L.A. screening	291	371	343	390	218	184	151	204	179	269	2,600

Referrals for Haight-Ashbury

84 No. of PSPs referred this month					92	309	1,386	631	825	742	3,985
85 Transportation					17	8	2	0	36	30	93
86 Sober Living					3	5	9	10	23	67	117
87 Sober Living With Child					0	1	1	0	1	2	5
88 Transitional Housing					66	125	188	168	243	367	1,157
89 Transitional Housing With Child					2	3	2	1	3	7	18
90 Shelter					1	4	10	7	7	13	42

Los Angeles County Department of Mental Health
 Post-Release Community Supervision Program
 Data for PSPs Based on Release Month
 As of July 31, 2012

	Oct-11	Nov-11	Dec-11	Jan-12	Feb-12	Mar-12	Apr-12	May-12	Jun-12	Jul-12
I. DMH Population (Total Clients In Tracking System)	494	490	420	408	379	341	300	257	226	219
Prescreened, Not Assessed at HUB	78	78	58	51	60	46	44	36	34	49
Prescreened, Assessed at HUB	163	156	148	165	182	153	160	142	118	119
Not Prescreened, Assessed at HUB	192	182	140	132	90	98	60	59	60	51
Not Prescreened, Not assessed at HUB, Receiving Treatment	61	74	74	60	47	44	36	20	14	0
II. DMH Treatment Determination	494	490	420	408	379	341	300	257	226	219
No Treatment Needed	86	66	22	10	11	15	9	11	9	7
Not Prescreened, Left HUB without Evaluation	56	38	35	37	20	2	0	0	0	0
Treatment Needed	352	386	363	361	348	324	291	246	217	212
Type of Treatment Required	352	386	363	361	348	324	291	246	217	212
Co-occurring disorder	201	246	248	239	256	241	238	203	178	181
Mental health	71	66	59	73	56	53	36	20	29	16
Substance abuse	45	38	26	23	24	29	17	23	10	15
Unknown/TBD	35	36	30	26	12	1	0	0	0	0
III. Client Acceptance of Treatment Referral	352	386	363	361	348	324	291	246	217	212
Yes	153	177	153	189	176	154	159	131	130	120
Released to Other Than HUB	0	0	0	0	0	0	0	0	0	0
No	54	66	82	45	51	54	28	22	16	14
N/A - Substance Abuse Services	45	38	26	23	24	29	17	23	10	15
N/A- Not Seen At HUB/Not Released to Other Than HUB	100	105	102	104	97	87	87	70	61	63
Accepted Treatment by Type Required	153	177	153	189	176	154	159	131	130	120
Co-occurring disorder	102	139	115	133	141	125	139	119	109	111
Mental health	50	36	37	53	34	28	20	12	21	9
Unknown	1	2	1	3	1	1	0	0	0	0

	Oct-11	Nov-11	Dec-11	Jan-12	Feb-12	Mar-12	Apr-12	May-12	Jun-12	Jul-12
IV Accepted Treatment By Level	153	177	153	189	176	154	159	131	130	120
State Hospital	0	0	0	0	0	0	0	0	0	0
Institution for Mental Diseases (IMD)	0	0	0	0	0	0	0	0	0	0
Inpatient++	0	1	2	1	0	1	1	0	1	1
IMD Step Down	1	5	6	3	3	5	2	5	1	2
Residential Treatment	0	0	1	0	2	0	0	0	1	0
Outpatient	152	171	144	185	171	148	156	126	127	117
V. Current Status of Clients Who Accepted Treatment	153	177	153	189	176	154	159	131	130	120
New Client/Status To Be Determined	1	1	2	7	4	6	7	7	29	32
Completed Treatment	0	0	0	0	0	0	0	0	0	0
In Treatment/Compliant with Treatment Plan	44	66	52	68	78	61	67	56	46	34
In Treatment/Not Complying With Treatment Plan	10	16	16	14	21	16	19	14	12	3
Left Treatment	0	0	0	0	0	0	0	0	0	0
Did Not Show for Treatment/Refused Treatment After Referral	53	55	41	47	34	45	55	33	24	14
In Inpatient Setting Awaiting Transfer to State Hospital/IMD	0	0	0	0	0	0	0	0	0	0
In Jail Awaiting Transfer to State Hospital/IMD	0	0	0	0	0	0	0	0	0	0
Incarcerated	18	15	14	9	7	4	1	3	2	2
Deceased+	1	0	1	0	0	0	0	0	0	0
Other (Client referred to Other County/Provider)	19	5	3	12	14	11	6	15	15	34
VI. Current Placement of Clients	153	177	153	189	176	154	159	131	130	120
Jail++	19	12	14	13	7	3	0	4	0	1
State Hospital	0	0	0	1	0	0	0	0	0	0
Institutions for Mental Disease	0	1	0	1	0	0	1	0	0	0
Inpatient++	0	0	1	1	0	1	0	0	0	0
IMD Step Down	1	5	4	6	4	5	0	3	1	2
Residential Treatment	3	4	2	3	4	6	3	1	1	1
Outpatient Services	65	89	78	99	101	76	82	61	63	38
Other	66	66	53	66	60	66	73	59	66	79
VII PSPs Who Have Accessed Services+++	267	288	258	260	236	198	184	149	119	76
PSPs with At least One Inpatient Admission	5	19	20	10	7	7	2	0	1	0
PSPs with At least One Crisis Service (PMRT, UCC, PES)	22	28	28	28	16	16	9	10	11	3
PSPs with At least One Service in Jail Since Release	152	148	143	121	108	93	83	57	47	26

+ Deaths due to medical conditions

++ Some Clients placed in inpatient facilities or County Jail pending completion of conservatorship proceedings necessary for State Hospital/IMD Placement

+++ Based on IS data; data entry may lag up to three months after the month of service

Jail Population Breakdown -- Final Day of the Month

	Pre-realignment		Post-realignment											+/-	Change
	Aug-11	Sep-11	Oct-11	Nov-11	Dec-11	Jan-12	Feb-12	Mar-12	Apr-12	May-12	Jun-12	Jul-12			
Other (open charges, probation violations, etc.)	10,908	10,560	9,950	10,113	9,412	9,400	10,163	9,660	9,746	9,658	9,840	10,502	-406	-4%	
Sentenced N3	0	0	789	1,468	2,139	3,005	3,148	3,957	4,314	4,571	4,758	5,035	5,035	-	
Sentenced Parole Violators	0	0	514	598	644	783	737	815	691	647	761	602	602	-	
Pending Parole Violators	1,101	1,321	1,312	1,014	790	747	570	456	370	381	337	352	-749	-68%	
County Sentenced	2,100	2,300	2,089	2,120	1,860	1,712	1,749	1,754	1,565	1,872	1,553	1,503	-597	-28%	
State Prison Population	1,489	1,282	1,017	747	730	710	771	818	887	883	821	934	-555	-37%	
Total Physical Count (ADP)	15,598	15,463	15,671	16,060	15,575	16,357	17,138	17,460	17,573	18,012	18,070	18,928	3,330	21%	